

1. Select the related word/letters/number from the given alternatives.
Nephrology : Kidney : : Ichthyology : ?
A. Fish B. Soil
C. Algae D. Insects
Ans. A
2. Select the related word/letters/number from the given alternatives.
AGREE : FGPIB : : RULES : ?
A. TJGSU B. TGJWS
C. TGJSU D. THJUS
Ans. B
3. Select the related word/letters/number from the given alternatives.
MUMBAI: UMBMIA :: GURUGRAM : ?
A. RUGUMARG B. UGURRGMA
C. UGURGRMA D. UGRURGAM
Ans. B
4. Select the related word/letters/number from the given alternatives.
30 : 16 :: 24 : ?
A. 14 B. 13
C. 20 D. 25
Ans. B
5. Select the odd word/letters/number/number pair from the given alternatives.
A. Dog B. Cat
C. Goat D. Lion
Ans. D
6. Select the odd word/letters/number/number pair from the given alternatives.
A. E5T B. O9S
C. U3A D. I7M
Ans. C
7. Select the odd word/letters/number/number pair from the given alternatives.
A. 862 B. 835
C. 439 D. 147
Ans. D
8. Select the odd word/letters/number/number pair from the given alternatives.
A. 45 B. 56
C. 55 D. 78
Ans.
9. A series is given with one term missing. Choose the correct alternative from the given ones that will complete the series.
MHZ, NIW, OKT, PNQ, ?
A. QNR B. QRN
C. RNM D. QNO
Ans. B

10. A series is given with one term missing. Choose the correct alternative from the given ones that will complete the series.
CFE, ILK, ORQ, ?
A. UXW B. VYW
C. UYW D. UXX
Ans. A
11. a series is given with one term missing. Choose the correct alternative from the given ones that will complete the series.
14, 22, 33, 47, 64, ?
A. 81 B. 84
C. 92 D. 94
Ans. B
12. In the following question, two statements are given each followed by two conclusions I and II. You have to consider the statements to be true even if they seem to be at variance from commonly known facts. You have to decide which of the given conclusions, if any, follows from the given statements.
Statement:
(I) Retail shops increasingly want to retain potential buyers.
(II) 10 % of the customers are lost due to out of stock products.
Conclusions:
(I) People don't find their sizes or specific color in stock and then they leave the store without any purchase.
(II) Retailers want maximum footfall to get converted into purchases.
A. Only conclusion II follows
B. Conclusion I and II both follow
C. Neither I nor II follow
D. Only conclusion I follows
Ans. B
13. A series is given with one term missing. Choose the correct alternative from the given ones that will complete the series.
Morning, Afternoon, Evening, ?
A. Day B. Week
C. Year D. Night
Ans. D
14. A, B, C and X, Y, Z were sitting facing each other. A, B and C were facing south and X, Y and Z were facing north. X was left of Y but in front of A; Z was not at the left end and was not facing C. Who were at the left and right positions respectively?
A. B and Y B. C and X
C. B and Z D. A and X
Ans. D

15. Arrange the given words in the sequence in which they occur in the dictionary.
- Drama
 - Dramatical
 - Dramaticism
 - Dramality
 - Dramatise
- A. i, iv, ii, iii, v B. i, iv, ii, v, iii
C. i, iv, v, iii, ii D. iv, i, v, iii, ii

Ans. A

16. In a certain code language "GASTRIC" is written as "UCIREKT". How will "DECEIVE" be written in that code language?
- A. ACBCCTG B. ACACCTG
C. EGFCGXK D. BFCCTGL

Ans. C

17. In the following question, select the missing number from the given series.

9	8	5
6	6	7
3	?	3
5	7	4

- A. 9 B. 4
C. 8 D. 2

Ans. D

18. Which of the following interchanges in signs and numbers will make the given equation correct?
- $$8 \times 6 + 4 = 52$$
- A. x and +, 8 and 52
B. + and x, 6 and 4
C. x and +, 8 and 4
D. + and x, 6 and 8

Ans. C

19. In the following question, which one set of letters when sequentially placed at the gaps in the given letter series shall complete it?
- _cca_a_ca_ac_ab
- A. abcbc B. abcb
C. abbcc D. abccb

Ans. A

20. From point A, Ram moves 100m in north-east direction, he again turns and moves 100m in south-east direction. He again turns and covers 100m south-west and finally covers 100m in north-west direction. In which direction is he now with respect to A?
- A. West B. South-west
C. At point A D. East

Ans. C

21. A word is represented by only one set of numbers as given in any one of the alternatives. The sets of numbers given in the alternatives are represented by two classes of alphabets as shown in the given two matrices. The columns and rows of Matrix-I are numbered from 0 to 4 and that of Matrix-II are numbered from 5 to 9. A letter from these matrices can be represented first by its row and next by its column, for example, 'K' can be represented by 10, 34 etc. and 'I' can be represented by 76, 88 etc. Similarly, you have to identify the set for the word 'LIGHT'.

	0	1	2	3	4
0	T	M	L	K	G
1	K	L	G	T	M
2	L	T	M	G	K
3	M	G	T	L	K
4	G	K	M	T	L

	5	6	7	8	9
5	F	R	I	A	H
6	I	A	F	H	R
7	R	I	H	F	A
8	A	H	R	I	F
9	H	F	A	R	I

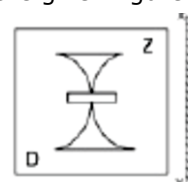
- A. 02, 65, 31, 58, 21
B. 20, 77, 12, 68, 13
C. 44, 87, 40, 95, 32
D. 33, 99, 04, 59, 43

Ans. D

22. Pointing a man, Suraj says, "He is the son of the sister of my father's wife". How is that man related to Suraj?
- A. Father B. Brother
C. Cousin D. Nephew

Ans. C

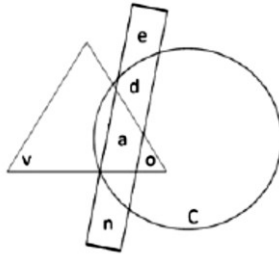
23. If a mirror is placed on the line XY, then which of the answer figures is the right image of the given figure?



- A. B.
C. D.

Ans. A

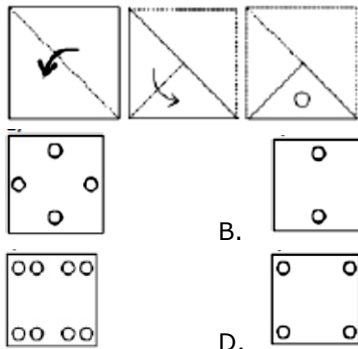
24. Which of the following part is a part of both circle and triangle?



- A. e B. v
C. o D. c

Ans. C

25. A piece of paper is folded and punched as shown below in the question figures. From the given answer figures, indicate how it will appear when opened.



- A. B.
C. D.

Ans. A

26. Which of these is not a UNESCO World Heritage Site?

- A. Ajanta Caves, Maharashtra
B. Red Fort, New Delhi
C. Victoria Memorial, Kolkata
D. Kaziranga Wildlife Sanctuary, Assam

Ans. C

27. Highest Civilian Honour received by Amitabh Bachchan is _____.

- A. Padma Shri
B. Padma Bhushan
C. Padma Vibhushan
D. Bharat Ratna

Ans. C

28. Which organ does detoxification and produces chemicals needed for digestion?

- A. Salivary glands
B. Pancreas
C. Thyroid gland
D. Liver

Ans. D

29. NaHCO_3 is chemical formula for _____.

- A. Borax B. Vinegar
C. Lime D. Baking soda

Ans. D

30. Which of the following elements has the lowest melting point?

- A. Chromium B. Hydrogen
C. Zinc D. Silver

Ans. B

31. C Programming language was developed by _____.

- A. Charles Babbage
B. Larry Wall
C. James Gosling
D. Dennis Ritchie

Ans. D

32. Which of these Indian Music Legends is the exponent of the instrument, Sitar?

- A. Bhimsen Joshi B. Ravi Shankar
C. Amjad Ali Khan D. Alla Rakha

Ans. B

33. If demand curve for alphonso mangoes is $D = 25000 - 70P$ and supply curve is $S = 10000 + 80P$, find the equilibrium quantity?

- A. 18,000 units B. 2,000 units
C. 1,800 units D. 200 units

Ans. A

34. Match the characteristics with their market structure:

- (a) Price > MC in both short and long run
(b) Faces highly elastic demand
A. (a) Monopolistic competition, (b) Pure competition
B. (a) Pure Monopoly, (b) Monopolistic competition
C. (a) Pure competition, (b) Monopolistic competition
D. (a) Oligopoly, (b) Pure competition

Ans. B

35. Anamalai Tiger Reserve is in which state?

- A. Telangana B. Madhya Pradesh
C. Tamil Nadu D. Kerala

Ans. C

36. Which is the most economical method of removing solid matter from water?

- A. Using deactivated carbon
B. Electrolysis
C. Distillation
D. Sedimentation

Ans. D

37. What is the Capital of Telangana State?

- A. Hyderabad B. Secunderabad
C. Vijayanagara D. Visakhapatnam

Ans. A

38. Birbal was an advisor in the court of?
A. Babur B. Akbar
C. Aurangzeb D. Jahangir
Ans. B
39. Humayun's Tomb is located in _____.
A. Delhi B. Agra
C. Gwalior D. Jaipur
Ans. A
40. Assembly line was invented by _____.
A. Alexander Parkes
B. Luigi Palmieri
C. Alexey Pajitnov
D. Ransom Eli Olds
Ans. D
41. Instrument for measuring blueness of the sky or ocean is called _____.
A. Bathymeter B. Ceraunograph
C. Cyanometer D. Barometer
Ans. C
42. Farad is unit of _____.
A. Capacitance
B. Reactance
C. Electric charge
D. Electric conductance
Ans. A
43. Under which Article is the Union Public Service Commission of India established?
A. Article 315 B. Article 250
C. Article 300 D. Article 52
Ans. A
44. The Westminster parliamentary system was developed in _____.
A. Spain B. Australia
C. UK D. USA
Ans. C
45. Whose ear Mike Tyson bite in professional boxing match in 1997 for the WBA Heavyweight Championship?
A. James Douglas
B. Evander Holyfield
C. Riddick Bowe
D. Michael Moorer
Ans. B
46. Who is the author of "India 2020: A Vision for the New Millennium"?
A. APJ Abdul Kalam
B. Shashi Tharoor
C. Narendra Modi
D. Arun Shourie
Ans. A
47. Psidium guajava is the scientific name of _____.
A. Guava B. Mango
C. Bamboo D. Jack fruit
Ans. A
48. In which year, RBI was nationalized?
A. 1939 B. 1949
C. 1959 D. 1969
Ans. B
49. Ottawa is the Capital City of _____.
A. France B. Norway
C. Canada D. Greece
Ans. C
50. Which drug is used as a Blood Thinner?
A. Warfarin B. Tramadol
C. Azithromycin D. Hydralazine
Ans. A
51. The value of x for which the expressions $15 - 7x$ and $15x + 7$ become equal is _____.
A. $-4/11$ B. $11/4$
C. $-11/4$ D. $4/11$
Ans. D
52. The largest 5 digit number exactly divisible by 95 is _____.
A. 99936 B. 99935
C. 99940 D. 99933
Ans. C
53. If $a : b = 3 : 8$, find the value of $(5a - 3b) / (2a + b)$.
A. $9/14$ B. $14/9$
C. $-9/14$ D. $-14/9$
Ans. C
54. If $5 - 3x < 4 - x$ and $5(2 - x) > 2 - 2x$, then x can take which of the following values?
A. 0 B. -1
C. 1 D. 3
Ans. C
55. The average revenues of 9 consecutive years of a company is Rs 76 lakhs. If the average of first 5 years is Rs 71 lakhs and that of last 5 years is Rs 83 lakhs, find the revenue for the 5th year.
A. Rs 88 lakhs B. Rs 84 lakhs
C. Rs 86 lakhs D. Rs 82 lakhs
Ans. C
56. If $2x + 3y = 0$ and $3x - 4y = 34$, then $x - y =$ _____.
A. 10 B. -10
C. 2 D. -2
Ans. A
57. 5 hrs after a goods train passed a station, another train travelling at a speed of 70 km/hr following that goods train passed through that station. If after passing the station the train overtakes the goods train in 9 hours. What is the speed of the goods train?
A. 45 km/hr B. 54 km/hr
C. 67.5 km/hr D. 36 km/hr
Ans. A

58. Marked price of an item is Rs 200. On purchase of 1 item discount is 22%, on purchase of 4 items discount is 33%. Rabia buys 5 items, what is the effective discount?
 A. 35 percent B. 30.8 percent
 C. 34 percent D. 20.4 percent
 Ans. B
59. Find two numbers such that their mean proportion is 8 and third proportion is 64.
 A. 4 and 8 B. 8 and 16
 C. 8 and 8 D. 4 and 16
 Ans. D
60. Akash is 3 times as good a workman as Baldev and therefore is able to finish a job in 40 days less than Baldev. Working together, they can finish it in _____.
 A. 15 days B. 60 days
 C. 20 days D. 10 days
 Ans. A
61. At what rate of compound interest per annum will a sum of Rs 20000 become Rs 23328 in 2 years?
 A. 8 percent B. 16 percent
 C. 24 percent D. 12 percent
 Ans. A
62. ΔABC is similar to ΔPQR . Length of AB is 18 cm and length of the corresponding side PQ is 12 cm. If area of ΔABC is 324 sq cm, what is the area of ΔPQR ?
 A. 72 sq cm B. 144 sq cm
 C. 36 sq cm D. 487.5 sq cm
 Ans. D
63. What is the slope of the line perpendicular to the line passing through the points (8,-2) and (3,-1)?
 A. 5 B. $\frac{3}{5}$
 C. $\frac{5}{3}$ D. $\frac{1}{5}$
 Ans. A
64. A pentagonal prism has 15 edges. How many vertices does it have?
 A. 12 B. 10
 C. 15 D. 20
 Ans. B
65. The diameter of a circle is equal to the side of the square. What is the area of the square if the area of the circle is 49π sq cm?
 A. 196 sq cm B. 154 sq cm
 C. 124 sq cm D. 98 sq cm
 Ans. A

66. The radius of a hemisphere is 7 cm, find its volume?
 A. 718.67 cubic cm
 B. 1437.34 cubic cm
 C. 239.56 cubic cm
 D. 359.34 cubic cm

Ans. A

67. 29 is 0.8% of?
 A. 3625 B. 1450
 C. 7250 D. 10875

Ans. A

68. If $\sin^{-1} \frac{5n}{3} = x$, then the value of x is
 A. $-\sqrt{3}/2$ B. $\sqrt{3}/2$
 C. -2 D. $-2/\sqrt{3}$

Ans. B

69. If $(\tan A + \tan B) / (1 - \tan A \tan B) = x$, then the value of x is
 A. $\tan(A + B)$ B. $\tan(A - B)$
 C. $\cot(A + B)$ D. $\cot(A - B)$

Ans.

70. If $1 / (\operatorname{cosec} A - \cot A) = x$, then the value of x is
 A. $\operatorname{cosec} A + \cot A$
 B. $\operatorname{cosec} A - \cot A$
 C. $\operatorname{cosec}^2 A + \cot^2 A$
 D. $\sqrt{[\operatorname{cosec}^2 A + \cot^2 A]}$

Ans. A

71. A vendor buys oranges at the rate of 5 for Rs 6 and sells at the rate of 2 for Rs 3. What will be the result?
 A. 25 percent loss B. 25 percent gain
 C. 20 percent gain D. 20 percent loss

Ans. A

72. Refer the below data table and answer the following Question.

	Boys / लड़के	Girls / लड़कियाँ
Medical/मेडिकल	20	45
Engineering/इंजीनियरिंग	90	25

What percent students who chose Engineering are girls?

- A. 13.89 B. 21.74
 C. 35.71 D. 27.78

Ans. B

73. Refer the below data table and answer the following Question.

	Cumulative production संचयी उत्पादन
January/जनवरी	300
February/फरवरी	500
March/मार्च	1080
April/अप्रैल	1630
May/मई	2030
June/जून	2320

How many cars were manufactured in the months of April and May?

- A. 690 B. 1130
C. 3660 D. 950

Ans. D

74. Refer the below data table and answer the following Question.

Day of the week सप्ताह का दिन	Distance jogged (in kms) दौड़ी गयी दूरी (किलोमीटर में)
Monday/सोमवार	3.5
Tuesday/मंगलवार	3
Wednesday/बुधवार	2.5
Thursday/गुरुवार	5
Friday/शुक्रवार	2.5
Saturday/शनिवार	2
Sunday/रविवार	4.5

If 400 calories are burned by jogging 5 km, how many calories were burnt in the given week?

- A. 1890 calories B. 1840 calories
C. 1790 calories D. 1740 calories

Ans. B

75. Refer the below data table and answer the following Question.

Items वस्तु	Yearly Expense in Rs. Lakhs लाख रुपये में वार्षिक खर्च
Raw Materials/कच्चा माल	6
Labour/श्रम	3
Rent/किराया	5
Interest/ब्याज	6
Taxes/कर	3

Rent and Taxes are what percent of total expenses?

- A. 27.53 percent B. 34.78 percent
C. 20.28 percent D. 42.03 percent

Ans. B

76. In the following question, out of the four alternatives, select the alternative which is the best substitute of the phrase.

To rummage about in a place or container in search of something.

- A. to rake B. to excavate
C. to ferret D. to poke

Ans. C

77. In the following question, out of the four alternatives, select the alternative which best expresses the meaning of the idiom/phrase.

to buy a lemon

- A. to purchase a vehicle that constantly gives problems
B. buying only half the recipe will not help you prepare the full dish
C. to purchase an insignificant thing which eventually becomes very useful
D. to buy stuff which you don't need

Ans. C

78. Select the antonym of

mere

- A. unadorned B. immense
C. sheer D. blunt

Ans. B

79. In the following question, some part of the sentence may have errors. Find out which part of the sentence has an error and select the appropriate option. If a sentence is free from error, select 'No Error'.

The population of Mumbai(A)/is greater than(B)/in any city in USA.(C)/No error(D)

- A. A B. B
C. C D. D

Ans. C

80. In the following question, the sentence given with blank to be filled in with an appropriate word. Select the correct alternative out of the four and indicate it by selecting the appropriate option.

The bank _____ his house as he had failed to pay the instalments despite repeated warnings.

- A. mobbed B. confiscated
C. hijacked D. captured

Ans. B

81. Rearrange the parts of the sentence in correct order:
At one level,
P-the law in understanding
Q-such cases of violence
R-one senses the limits of
A. RQP B. PQR
C. RPQ D. QRP
- Ans. C
82. In the following question, some part of the sentence may have errors. Find out which part of the sentence has an error and select the appropriate option. If a sentence is free from error, select 'No Error'.
For a full week(A)/she enjoyed the benefits(B)/ of being a big sister.(C)/No error(D)
- A. A B. B
C. C D. D
- Ans. D
83. Select the synonym of
to ordain
A. to anoint B. to retract
C. to veto D. to void
- Ans. A
84. Select the synonym of
to stranded
A. to douse B. to aground
C. to swamp D. to inundate
- Ans. B
85. Improve the bracketed part of the sentence.
All the allegations levelled **(over)** the poor watchman were found to be baseless.
A. upon B. off
C. against D. no improvement
- Ans. C
86. Rearrange the parts of the sentence in correct order.
It is the right to
P-who see us at our most vulnerable
Q-the indiscretions of doctors
R-privacy that protects us from
A. QRP B. QPR
C. PRQ D. RQP
- Ans. D
87. Select the antonym of
to comprise
A. to dispute B. to embody
C. to span D. to encompass
- Ans. A

88. In the following question, out of the four alternatives, select the alternative which best expresses the meaning of the idiom/phrase.

to cast iron stomach

- A. a very greedy person
B. to be able to eat or drink anything without any problems
C. to be indifferent to harsh words
D. to face so many difficulties in life that one now becomes immune to even poison
Correct Answer: to be able to eat or drink anything without any problems

Ans. B

89. In the following question, a sentence has been given in Active/Passive voice. Out of four alternatives suggested, select the one, which best expresses the same sentence in Passive/Active.

The event manager is making all the reservations.

- A. All the reservations would be made by the event manager.
B. All the reservations are being made by the event manager.
C. All the reservations would have been made by the event manager.
D. All the reservations will have been made by the event manager.

Ans. B

90. Improve the bracketed part of the sentence.

"I am the only man in the world who **(can)** paint a picture so true to life," he said.

- A. will
B. could
C. may
D. no improvement

Ans. D

91. In the following question, out of the four alternatives, select the alternative which is the best substitute of the phrase.

To sell (stocks or other securities or commodities) in advance of acquiring them, with the aim of making a profit when the price falls.

- A. bilking
B. duping
C. conning
D. shorting

Ans. D

92. In the following question, a sentence has been given in Direct/Indirect speech. Out of the four alternatives suggested, select the one, which best express the same sentence in Indirect/Direct speech.

'Do you have anything to say on behalf of the accused?' said the judge finally.

- A. The judge finally asked that if he had anything to say on behalf of the accused.
B. The judge finally ask that whether he had anything to say on behalf of the accused.
C. The judge finally asked that if he has anything to say on behalf of the accused.
D. The judge finally asked that if he has had anything to say on behalf of the accused.

Ans. B

93. Select the word with the correct spelling.

- A. amphybia B. indanted
C. ancumber D. levelled

Ans. D

94. In the following question, sentence given with blank is to be filled in with an appropriate word. Select the correct alternative out of the four and indicate it by selecting the appropriate option.

A large crowd _____ to get a glimpse of their favourite star.

- A. gathered B. rallied
C. clustered D. compiled

Ans. A

95. Select the word with the correct spelling.

- A. tidlers B. thistlees
C. pulchritude D. tendered

Ans. C

96. In the following passage, some of the words have been left out. Read the passage carefully and select the correct answer for the given blank out of the four alternatives.

In a strange _____, the production and the consumption of the event become cause for concern. _____ wonders whether newer forms of "non-caring" or violence are appearing. Somehow, silence, even _____, quietly suppresses a meditation on such events. _____ a professor, I can recollect the number of occasions when my students have cried as we discussed such events in class. _____, society seems so indifferent.

In a strange _____,

- A. way B. form
C. step D. method

Ans. A

97. In the following passage, some of the words have been left out. Read the passage carefully and select the correct answer for the given blank out of the four alternatives.

In a strange _____, the production and the consumption of the event become cause for concern. _____ wonders whether newer forms of "non-caring" or violence are appearing. Somehow, silence, even _____, quietly suppresses a meditation on such events. _____ a professor, I can recollect the number of occasions when my students have cried as we discussed such events in class. _____, society seems so indifferent.

_____ wonders whether newer forms of "non-caring" or violence are appearing.

- A. Anyone B. One
C. Someone D. Somebody

Ans. B

98. In the following passage, some of the words have been left out. Read the passage carefully and select the correct answer for the given blank out of the four alternatives.

In a strange _____, the production and the consumption of the event become cause for concern. _____ wonders whether newer forms of "non-caring" or violence are appearing. Somehow, silence, even _____, quietly suppresses a meditation on such events. _____ a professor, I can recollect the number of occasions when my students have cried as we discussed such events in class. _____, society seems so indifferent.

Somehow, silence, even _____, quietly suppresses a meditation on such events.

- A. attention B. bias
C. regard D. indifference

Ans. D

99. In the following passage, some of the words have been left out. Read the passage carefully and select the correct answer for the given blank out of the four alternatives.

In a strange _____, the production and the consumption of the event become cause for concern. _____ wonders whether newer forms of "non-caring" or violence are appearing. Somehow, silence, even _____, quietly suppresses a

meditation on such events. _____ a professor, I can recollect the number of occasions when my students have cried as we discussed such events in class. _____, society seems so indifferent. _____ a professor,

- A. Like B. Alike
- C. As D. Being

Ans. C

100. In the following passage, some of the words have been left out. Read the passage carefully and select the correct answer for the given blank out of the four alternatives.

In a strange _____, the production and the consumption of the event become cause for concern. _____ wonders whether newer forms of "non-caring" or violence are appearing. Somehow, silence, even _____, quietly suppresses a meditation on such events. _____ a professor, I can recollect the number of occasions when my students have cried as we discussed such events in class. _____, society seems so indifferent. _____, society seems so indifferent.

- A. Yet B. Thus
- C. Hence D. So

Ans. A